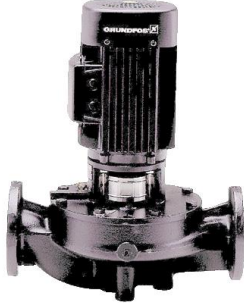


**Qty. Description**

1 LP 100-125/130 A-F-A-AUUE



Note! Product picture may differ from actual product

Product No.: [48000051](#)

Pump without motor

Single-stage centrifugal in-line single-head pump.

The in-line design with opposite suction and discharge ports enables mounting in pipework or on a concrete foundation.

The shaft seal is a corrosion resistant maintenance-free mechanical seal.

Liquid:

Pumped liquid: Water  
Liquid temperature range: 0 .. 90 °C  
Selected liquid temperature: 20 °C  
Density: 998.2 kg/m<sup>3</sup>

Technical:

Pump speed on which pump data are based: 2890 rpm  
Rated flow: 85 m<sup>3</sup>/h  
Rated head: 17 m  
Actual impeller diameter: 130 mm  
Impeller nom: 125 mm  
Primary shaft seal: AUUE

Materials:

Pump housing: Cast iron  
EN-JL1040  
ASTM Class 35-40  
Impeller: Stainless steel  
DIN W.-Nr. 1.4301  
AISI 304

Installation:

Max pressure at stated temp: 16 bar / 90 °C  
Flange standard: DIN  
Pipe connection: DN 100  
Pressure rating: PN 16  
Port-to-port length: 550 mm  
Flange size for motor: F265

Electrical data:

Power (P2) required by pump: 5.5 kW

Others:

Net weight: 59.1 kg



Company name:

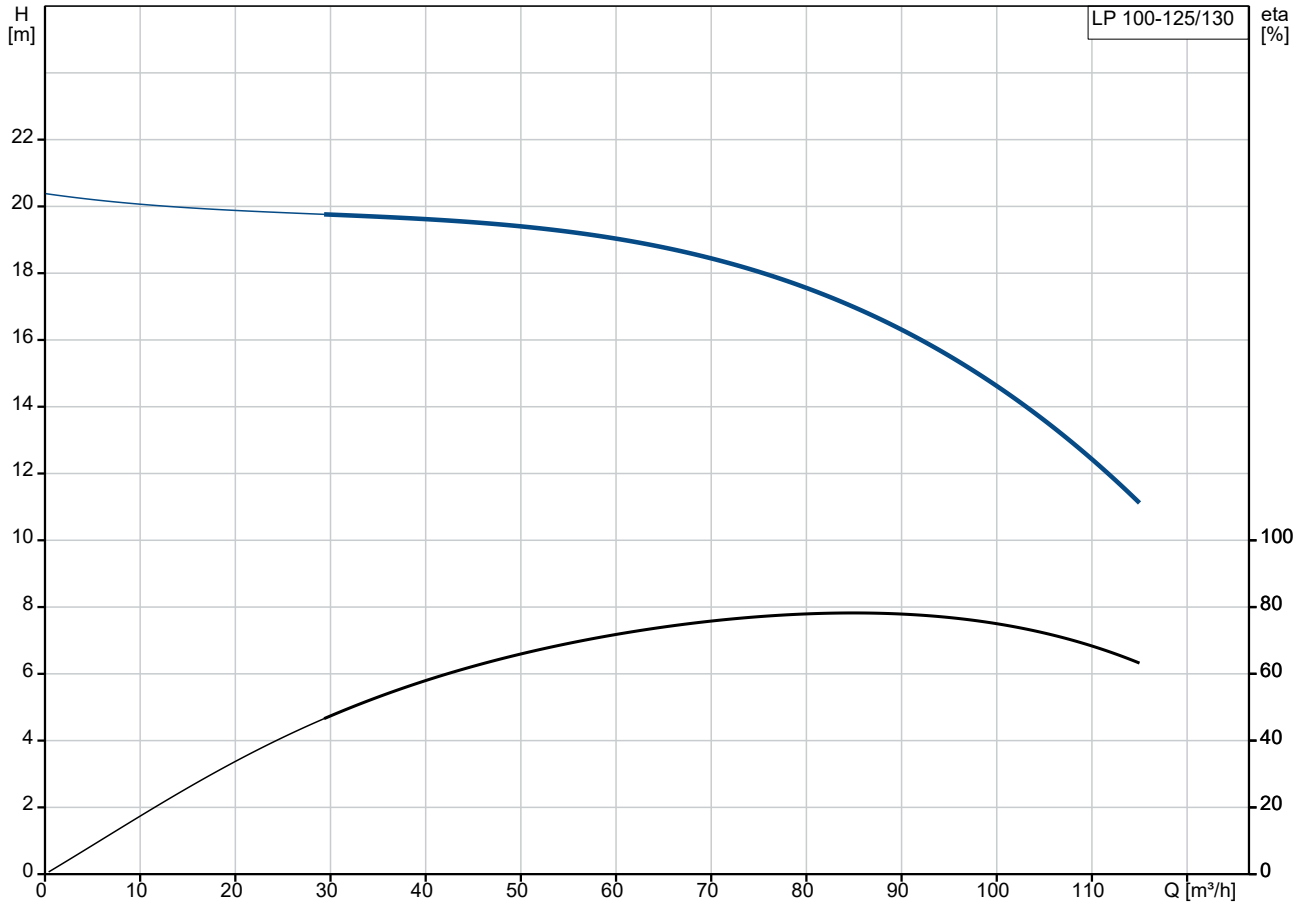
Created by:

Phone:

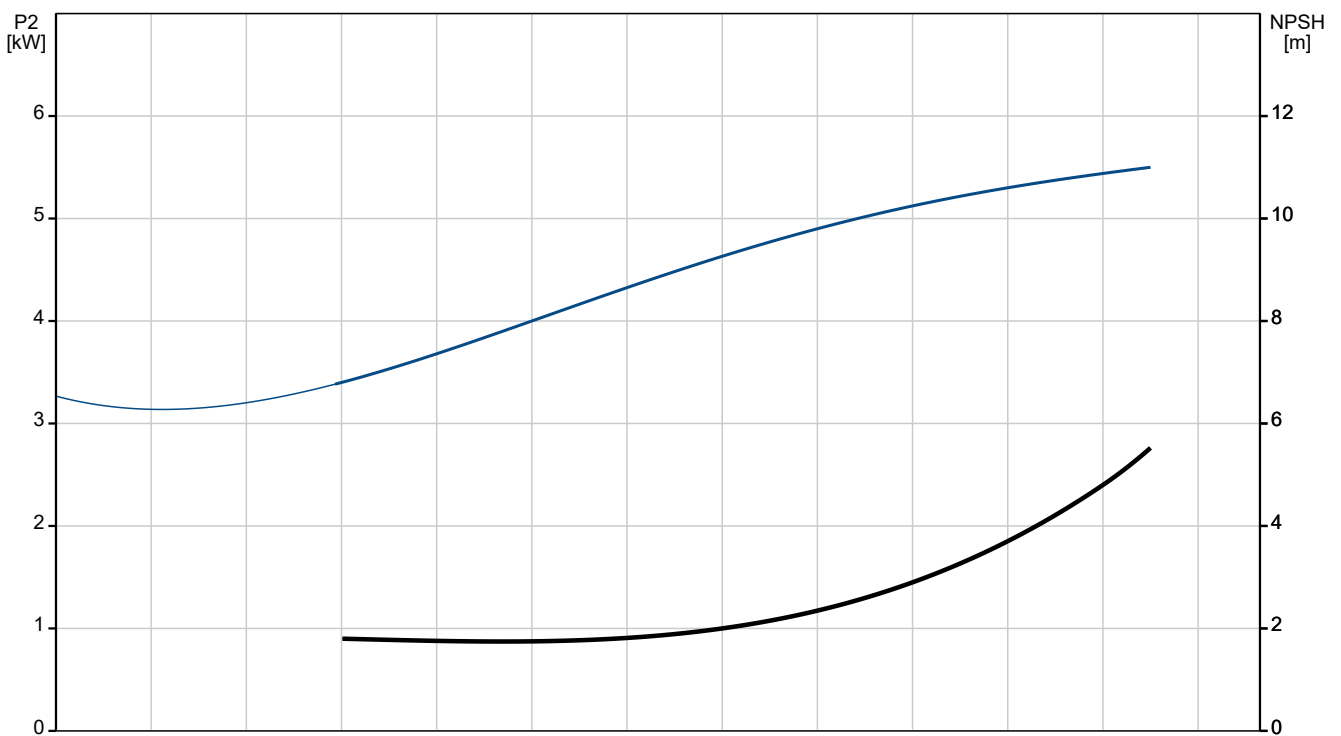
Date:

03/09/2024

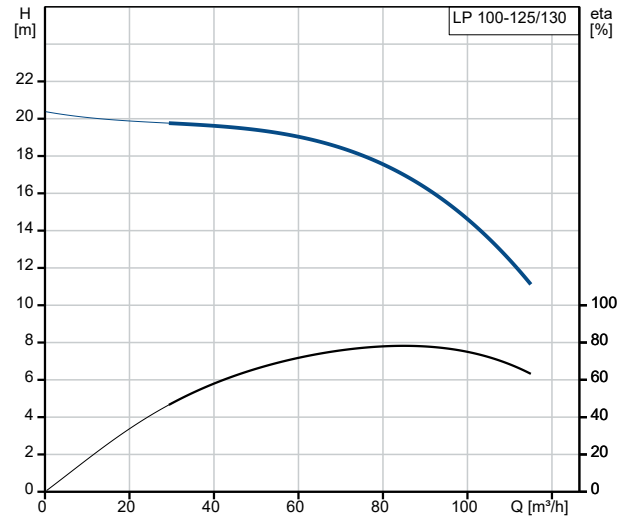
### 48000051 LP 100-125/130 A-F-A-AUUE 50 Hz



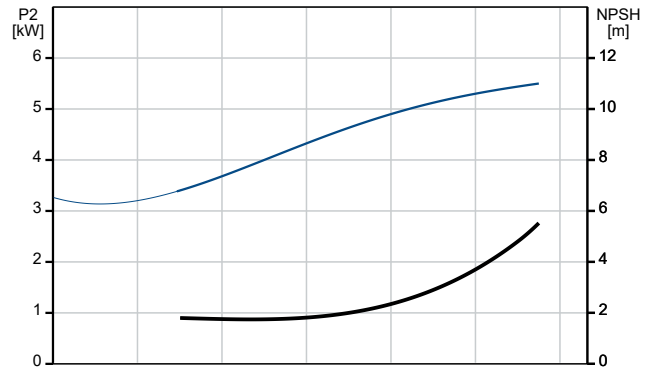
Pumped liquid = Water  
Liquid temperature during operation = 20 °C  
Density = 998.2 kg/m³



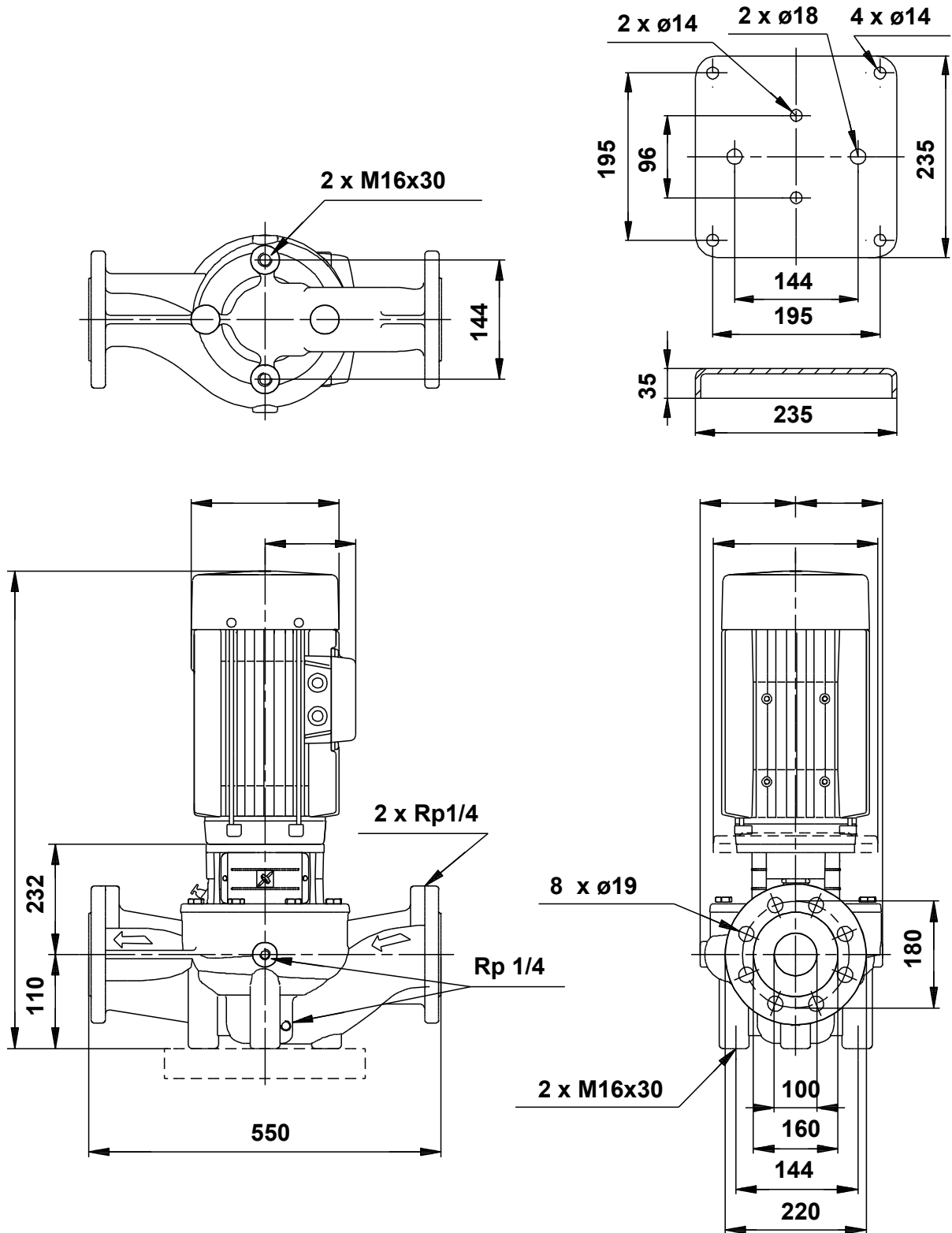
Description	Value
<b>General information:</b>	
Product name:	LP 100-125/130 A-F-A-AUUE
Product No:	48000051
EAN number:	5700390473396
<b>Technical:</b>	
Pump speed on which pump data are based:	2890 rpm
Rated flow:	85 m <sup>3</sup> /h
Rated head:	17 m
Actual impeller diameter:	130 mm
Impeller nom:	125 mm
Primary shaft seal:	AUUE
Pump version:	A
Model:	C
<b>Materials:</b>	
Pump housing:	Cast iron
Pump housing:	EN-JL1040
Pump housing:	ASTM Class 35-40
Impeller:	Stainless steel
Impeller:	DIN W.-Nr. 1.4301
Impeller:	AISI 304
Material code:	A
<b>Installation:</b>	
Max pressure at stated temp:	16 bar / 90 °C
Flange standard:	DIN
Pipe connection:	DN 100
Pressure rating:	PN 16
Port-to-port length:	550 mm
Flange size for motor:	F265
Connect code:	F
<b>Liquid:</b>	
Pumped liquid:	Water
Liquid temperature range:	0 .. 90 °C
Selected liquid temperature:	20 °C
Density:	998.2 kg/m <sup>3</sup>
<b>Electrical data:</b>	
Power (P2) required by pump:	5.5 kW
<b>Others:</b>	
Net weight:	59.1 kg



Pumped liquid = Water  
 Liquid temperature during operation = 20 °C  
 Density = 998.2 kg/m<sup>3</sup>



## 48000051 LP 100-125/130 A-F-A-AUUE 50 Hz



Note! All units are in [mm] unless others are stated.  
 Disclaimer: This simplified dimensional drawing does not show all details.